



Article ID: 3000
Publish date: 01/06/2006
Revision: 1.0

Subject: Creating RTE Silent Installation Using eToken NG-FLASH

Classifications: eToken Hardware > eToken NG-FLASH

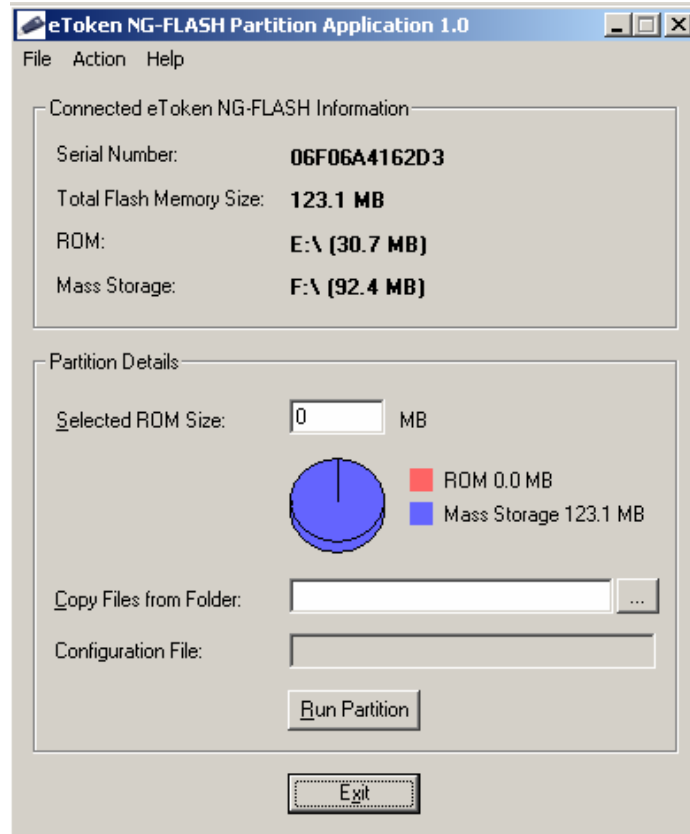
The information in this article applies to: eToken NG-FLASH, NGFlashPartition tool and RTE 3.65.

Procedure:

In order to create a silent installation upon eToken NG-FLASH insertion, follow the steps below:

- 1 Decide which installation you wish to perform, as RTE installation can include specific parameters, as described in the RTE 3.65 Admin guide, Chapter 4, P 17.
- 2 Create an executable which is responsible to run the RTE.msi, with predefined parameters. In order to create the executable, you will need to use Visual Studio, or any other development environment which can compile a code to executable. The code is attached below - silentrte.cpp.
- 3 Create a file name AutoRun.inf which will launch the process. A sample file is attached in the link below.
- 4 Install the NGFLASHPARTITION.msi tool and launch it.
- 5 Insert the eToken NG-FLASH.

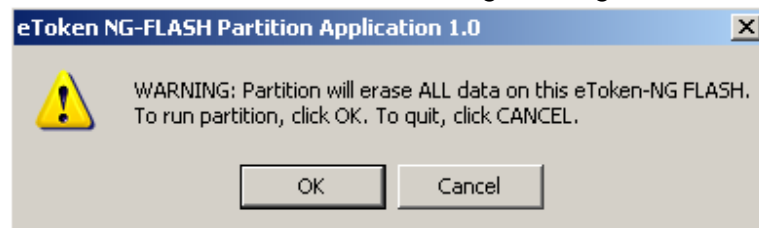
6 The following should be displayed:



7 Fill in the **Selected ROM size** with the size of the installation partition; we recommend 7 MB for RTE only installation.

8 Select the folder containing the executable (*silent~~rte~~.exe* in this example), the *RTE.msi* and *Autorun.inf*.

9 Click **Run Partition**. The following message will be displayed:

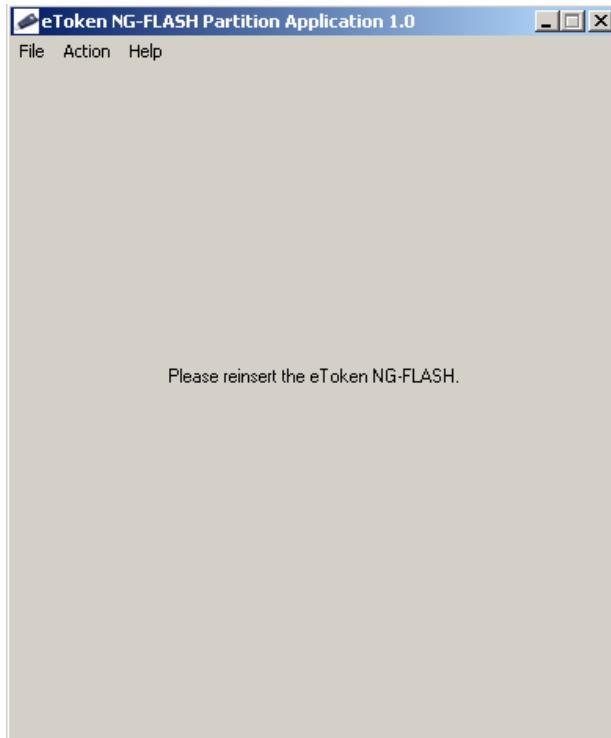


All Rights Reserved © 2006. Aladdin Knowledge Systems.

Only authorized Aladdin distributors, re-sellers, customers and agents bound by a confidentiality agreement may use this document. Copies of this document may not be given in their entirety to any non-authorized entity. eToken is a trademark of Aladdin Knowledge Systems. All other trademarks, trade names, and images mentioned herein belong to their respective owners

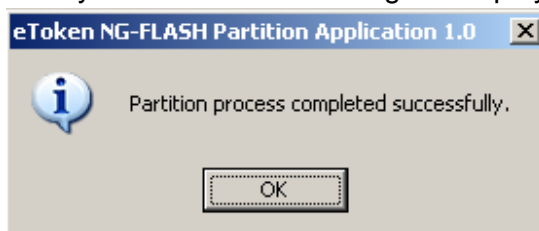


10 Click **OK**. The following window will be displayed:



11 Remove and insert the eToken NG-FLASH.

12 Finally a confirmation message is displayed:



13 Click **OK**. Now the eToken NG-FLASH is ready.

14 If you wish to prepare many eToken NG-FLASH devices, you can create a single configuration file to the eToken NG-FLASH Partition tool, and load it whenever you wish to have the same partition definition on the eToken NG-FLASH. In order to do so, please select **File> Save As..** on the menu and use the saved file to configure the tool in future use.

Additional Information:

Silent.cpp

// silentrte.cpp : Defines the entry point for the application.

#include "stdafx.h"

#include "silentrte.h"

#include "shellapi.h"

int APIENTRY _tWinMain(HINSTANCE hInstance,

HINSTANCE hPrevInstance,

LPTSTR lpCmdLine,

int nCmdShow)

{

UNREFERENCED_PARAMETER(hPrevInstance);

UNREFERENCED_PARAMETER(lpCmdLine);

// TODO: Place code here.

*ShellExecute(NULL, _T("open"), _T("msiexec.exe"), _T("/i RTE_3.65.msi
/qb"), NULL, SW_HIDE);*

return 0;

}

AutoRun.inf

[autorun]

OPEN=silentrte.exe

ICON=silentrte.exe,0

All Rights Reserved © 2006. Aladdin Knowledge Systems.

Only authorized Aladdin distributors, re-sellers, customers and agents bound by a confidentiality agreement may use this document. Copies of this document may not be given in their entirety to any non-authorized entity. eToken is a trademark of Aladdin Knowledge Systems. All other trademarks, trade names, and images mentioned herein belong to their respective owners

**Notes:**

For additional information please refer to the document
NG_Flash_Partition_Application.pdf.

If the PKI Client is already installed, the silent installation will not be initiated.

This article refers to PKI Client (RTE) silent installation but can be implemented for any MSI file.